



## Ciel Covid-19 Updates

Updated on 1.04.2022

Health is our top priority. With our updated COVID-response, we ensure to keep our space sanitized and safe. This is a live document, please check back for the latest updates.

Completion of our survey [Ciel Creative Space | Visitor Screening](#) is required for everyone entering Ciel. ONE representative for a production/event may complete the survey on behalf of your team, and serve as the person responsible for tracking Covid-19 Vaccination status, symptoms, test results and contact tracing under [HIPAA guidelines](#).

Even if you are fully vaccinated as defined by the CDC, **face masks ARE required** in our common areas and restrooms.

The latest guidelines for safe practices can be found here:

<https://www.cdc.gov/coronavirus/2019-ncov/vaccines/fully-vaccinated-guidance.html>

To keep our community safe, we are doing the following:

- Ciel Staff, office members, and partners on site are monitored under HIPAA compliance
- Our staff is trained on CDC, state and local health guidelines and is C19CO and SafeSet certified.
- Masks are mandatory for individuals in the common areas inside the building. KN-95 or layered masks are [recommended by CDC](#).
- With 30' high ceilings, expansive studios stretching over 44,000 square feet and windows that reach the ceiling, we are able to provide air ventilation throughout our space.
- Hand sanitizer is located at the entrances of all common areas and studios.
- High touch points & surfaces in common areas are sanitized hourly using disinfectants and UV light wands. Exterior high contact areas, such as handles, keys and lock boxes, are sanitized regularly.
- With the help of our partners, equipment is cleaned and disinfected upon return. UV lights are used on close contact equipment, such as radios, headsets, and craft service items.
- We have sanitation kits and PPE available onsite, electrostatic & UVC sterilizing available.
- Touchless Thermometers are available on site for personal use, and temperatures are taken for all visitors to the site.

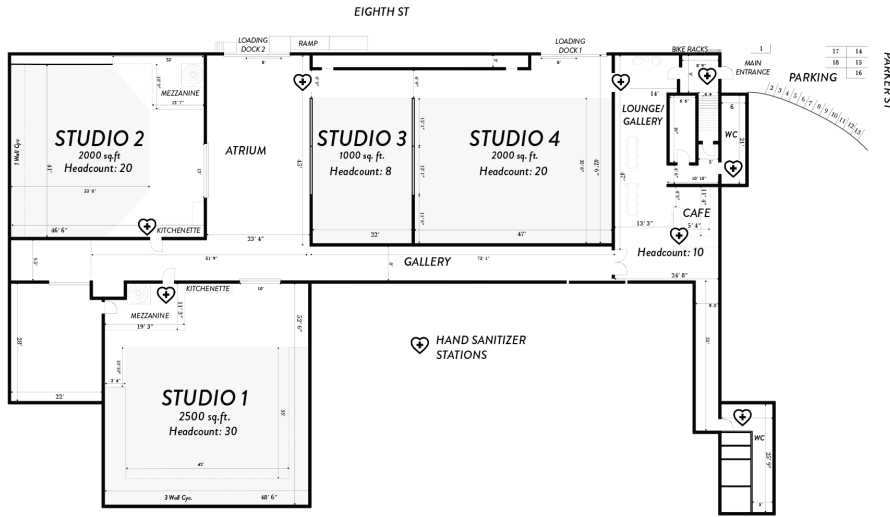
Please see guidelines for:

- Social Distancing.....p2
- Health and Safety.....p3
- Covid Testing.....p3
- EQ Rentals.....p3
- FAQs and References.....p4

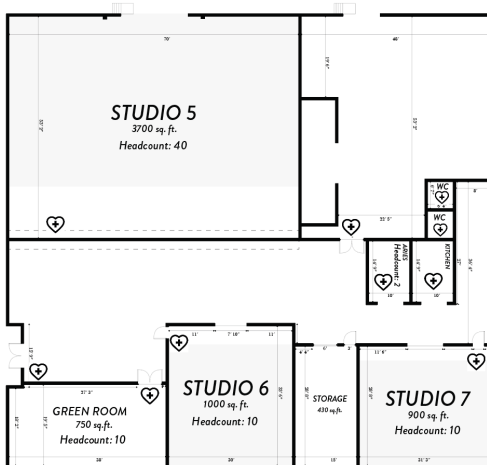
## SOCIAL DISTANCE GUIDELINES

We are operating at a reduced capacity. We recommend socially-distanced headcounts per studio, as per CDC guidelines. Headcounts for crews should consider how to accommodate sets, equipment, and other obstacles that impact the available square footage. See diagrams below for headcounts per studio.

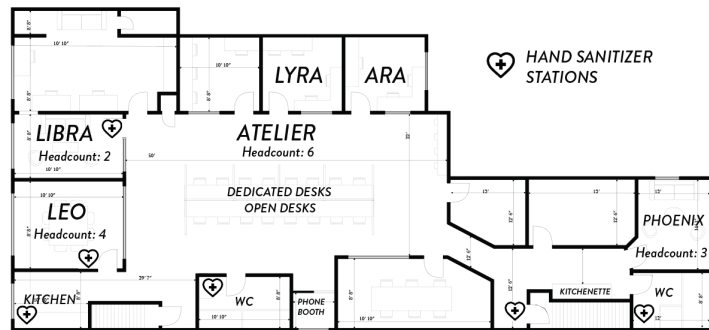
### CIEL 1 STUDIOS



### CIEL 2 STUDIOS



### ATELIER



## HEALTH & SAFETY GUIDELINES

1. Even if you are fully vaccinated as defined by the CDC, face masks ARE required in our common areas and restrooms. The latest guidelines for safe practices can be found here:

<https://www.cdc.gov/coronavirus/2019-ncov/vaccines/fully-vaccinated-guidance.html>

KN-95 or layered masks are [recommended by CDC](#).

2. For groups of 10 or more, a Covid-19 compliance officer is required for your production or event.

3. Completion of our survey [Ciel Creative Space | Symptom Screening](#) is required for everyone entering Ciel. ONE representative for a production/event may complete the survey on behalf of your team, and serve as the person responsible for tracking Covid-19 symptoms, test results and contact tracing under [HIPAA guidelines](#).

- Your team should prioritize what roles are required on set (client, creative, crew) to minimize headcount and determine what roles can be supported via remote streaming. Social distancing of 6 feet should be maintained while on-site for unvaccinated people. Ciel is conducting restricted tours of the common spaces (see below). If your production or event requires a fully closed set, please contact us for Buyout rates.

## COVID-19 TESTING

- As of May 1st, 2021, the Producer or Event Coordinator can internally assess the risk level for their specific production, and manage HIPAA compliance in regards to any confidential health data, including vaccinations. The Producer should assess the need to perform additional PCR or rapid testing for Covid-19 for their crew members, including any un-masked talent.
- It is recommended that for all shoots and events, a PCR test result for all crew and talent age 9 and older should be conducted within 72 hours of entering Ciel. Testing results must be tracked by the production team. For shoots and events lasting longer than 7 days, another PCR test should be performed.
- UN-MASKED TALENT: It is recommended that one rapid antigen test should be conducted each day before entering Ciel for age 9 and older. For anyone younger than 9, the parent or guardian should be tested.
- Any rapid testing should be conducted outside, before entering the building.
- TOURS: visitors are limited to 15 minutes per building, temperature may be taken and [Symptom Screening](#) prior to entering, and KN-95 masks are required (available for sale if needed)
- MEALS: CDC states that indoor dining is a high-risk activity. We recommend that all meals should be taken outside if possible.
- TRAVEL: For unvaccinated people, [CDC recommends](#) PCR testing 1-3 days prior to traveling, again 3-5 days after traveling, and self-quarantine for a full 7 days after travel, even if your test is negative.

## EQ RENTALS

- EQ partners use PPE & guarantee sanitized gear
- EQ must be rented through our partners to ensure gear is sanitized and delivered in your studio(s) before your production.
- Production EQ & G&E rental link:
  - [Ciel EQ](#)

## FAQs:

- What are your social distancing guidelines and headcounts?
  - See our floor plan for recommended crew sizes and headcounts per space. You must consider how much square footage will be taken up by sets, props, etc and reduce headcounts accordingly.
- What if I have a 1 day project at Ciel?
  - Everyone entering Ciel that is age 9 and older must take a PCR test within 72 hours of coming in. You are responsible for tracking & maintaining those results under HIPAA guidelines, and perform contact tracing in the event of an exposure.
- How often do you clean/sanitize?
  - High touch points & surfaces in common areas are sanitized hourly. Sanitation kits are also available for sale.
- How strong is your wifi?
  - Hella strong. Inquire within.
- Do I have to sign any forms or do an assessment before coming to Ciel?
  - YES. As part of our health and safety procedures, before entering the premise we require completion of our survey [Ciel Creative Space | Visitor Screening](#) . A representative for a production/event may complete the survey on behalf of your team, and serve as the person responsible for contact tracing.

## REFERENCES:

[Berkeley Health Dept](#)

[Alameda County Health Ordinance](#)

[CDC](#)

[California Health Ordinance](#)